

## How to output with SCSI adapter on EagleRIP 4.x or PSPNT 4.x

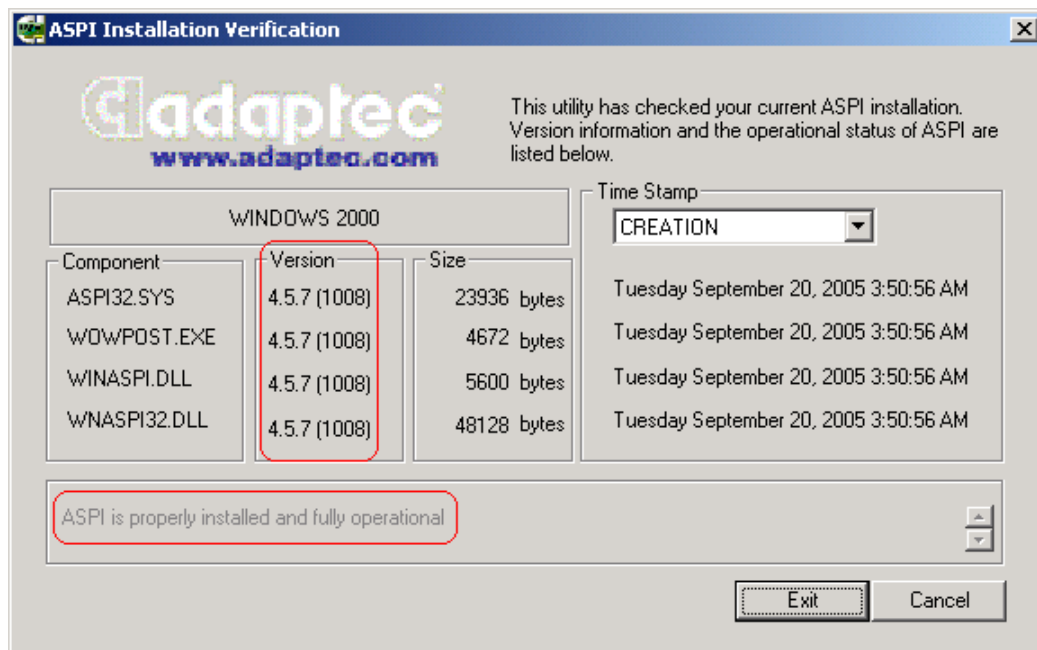
If the customer uses SCSI adapter to connect Screen FT-R/FujiFilm or other SCSI interface output device with RIP 4.x, please install Windows ASPI package 4.5.7 first, the ASPI package is provided by AHA Adaptec Company, you can download it from website of Adaptec:

[http://www.adaptec.com/en-US/support/scsi\\_soft/](http://www.adaptec.com/en-US/support/scsi_soft/)

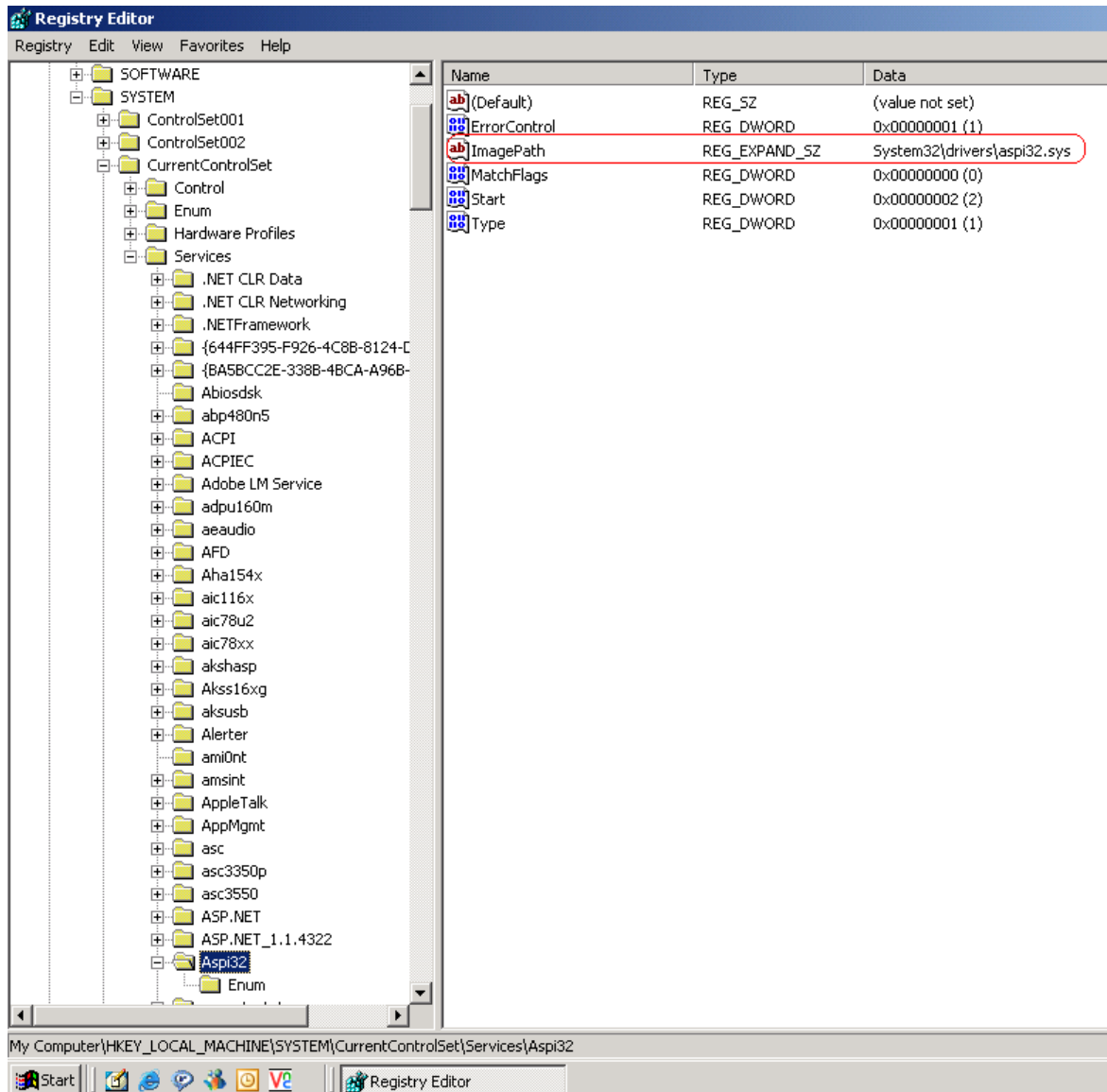
You also can find Windows ASPI package at Tools\ASPI457 folder of RIP 4.x installation CD.

### How to install ASPI package 4.5.7 successfully:

1. Double click "INSTASPI.BAT".
2. The window of "ASPI Installation Verification" will popup, this is an utility to check the ASPI installation, if you can see the information of "ASPI is properly installed and fully operational" in the bottom of the window, it means the installation is successful. Please click "Exit" button to close the window.



3. **Reboot** the computer to make the changes active.
4. Make sure the register value of "Image path" under HKEY\_LOCAL\_MACHINE \SYSTEM\CurrentControlSet\Services\ASPI32\ is "System32\drivers\aspi32.sys" as shown below:



Now you can output the job to the SCSI imagesetter by RIP 4.x.

If you always cannot install ASPI 4.5.7 successfully on your computer (there is no register value of image path), please run **FixAspi.exe** to repair your registration of the computer, then check the register value.

If you still hope to use RIP 3.0 to output on the same OS, please go to the folder of `\\%RIP 4.x%\Drivers\Device`, copy `ASPI32.SYS` and `WNASPI32.DLL` to `\\%RIP 3.0%\Drivers`, replace the old files.

End